

# INNOVATIVE

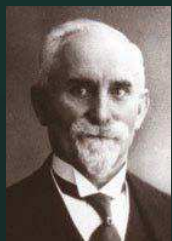
For more than 117 years



Since its foundation in 1895, BRENNKE has constantly influenced the market with its groundbreaking inventions of new calibers, slugs and bullets. We started the development of modern and universal hunting bullets 117 years ago and are still going ahead.

In future, you can expect further interesting inventions from BRENNKE.

- 1898 ➤ 1<sup>st</sup> slug
- 1905 ➤ BRENNKE Ideal bullet
- 1917 ➤ Cal. 7x64/7x65 R
- 1919 ➤ TIG®
- 1927 ➤ Cal. 9,3x64
- 1930 ➤ Sharp cutting edge
- 1935 ➤ TUG®
- 2001 ➤ RubinSabot, SuperSabot
- 2003 ➤ TOG®
- 2007 ➤ TAG® (leadfree)
- 2009 ➤ TIG® nature (leadfree)
- 2010 ➤ TUG® nature (leadfree)
- 2012 ➤ RubinSabot nature (leadfree)
- 2012 ➤ Basic



*"A Brenneke bullet has to kill the game quickly and without preventable suffering."*

*Wilhelm Brenneke*

  
**ORIGINAL  
BRENNKE**  
[www.brenneke.com](http://www.brenneke.com)

BRENNKE GMBH  
 P.O. Box 16 46  
 D-30837 Langenhagen  
 Phone +49 (0)511-9 72 62-0  
 Fax +49 (0)511-9 72 62-62  
 Mail [info@brenneke.com](mailto:info@brenneke.com)

Sold to authorized persons only.



## OUR PRODUCTS

Centerfire cartridges · Shotgun Slug cartridges

Version 2013

  
**ORIGINAL  
BRENNKE**

# BRENNEKE – SINCE 1895, ALWAYS A STEP AHEAD



The typical characteristic of the Original BRENNEKE (TIG®) is a funnel-shaped groove in the harder tail core in which the softer front lead core fits plug-like. This core construction supports the mushrooming deformation of the TIG® Bullet and ensures high energy transfer in the target. It is most suitable for all small and moderately heavy types of game. In the calibre groups of 7 mm and 8 mmS, it is used successfully throughout the world on a daily basis.

The Original BRENNEKE Torpedo-Universal Bullet (TUG®) differs from the TIG® by having a tail core which fits conically into the front lead core by a corresponding groove. By means of this shape of core the mushrooming effect is reduced whereas the penetration effect is even higher. Available in calibres of .30 and 9,3 mm, the TUG® is particularly suitable for medium sized and heavy game.

Due to the long and slim shape of the bullet with a copper/nickel plated steel jacket TIG® and TUG® bullets provide constant excellent accuracy both in new and much used barrels. The BRENNEKE invention of the sharp pointed edge punches a circular hole at point of impact. This leaves cut hair and a scent trail at the entrance hole.

The design of two cores provides controlled energy transfer and adjusts to the resistance of the game's body.

Hunters who value a controlled-expansion bullet with high retained weight, outstanding accuracy and performance as well as universal applicability are best equipped with the Torpedo Optimal Bullet (TOG®). Thanks to its unique design and the combination of tried-and-tested features with innovative improvements, the TOG® offers a level of performance that could not be achieved before.

The leadfree Original BRENNEKE® Torpedo Alternative Bullet (TAG®) is a real alternative to ordinary rifle projectiles. It meets the demand of hunters for a reliable, highly effective bullet suitable for almost any game and distance. Distinguishing marks of the TAG® are the rapid fragmentation of the front part of the bullet while the rear portion of bullet causes substantial exit wound.

BRENNEKE

BASIC



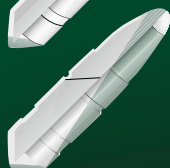
## The BRENNEKE Basic – simply efficient!

If the hunters are looking for an inexpensive yet accurate and reliable bullet that brings the prey down fast, the Basic is their choice. The focus while developing the Basic was on manufacturing a bullet that gives fast expansion and high energy transfer for small- and medium-sized game (up to 50 kg). Fast expansion and high energy transfer will provide knock-down power that stops game in its tracks.

For the price-conscious hunter who wants to practice with his actual hunting cartridge, the Basic is the perfect solution, due to its excellent value for your money.

The Basic is a one-core, jacketed fragmentation bullet. Its tombac/red brass jacket with a long straight guiding surface, together with the proven tail design, gives the Basic its excellent precision. The sharp edge also delivers cut hair at point of impact. The slightly hardened lead core results in controlled fragmentation in any kind of game, and gives the hunter fast and reliable effectiveness. Due to the special powders used, the Basic has very soft recoil.

## BRENNEKE Basic – the perfect bullet for the price sensitive hunter!



TIG® and TUG® nature are the revolutionary leadfree versions of regular TIG® and TUG®. Two tin cores are covered by our tried-and-tested nickel-plated steel jacket. Due to its innovative construction, the TIG® and TUG® nature impact a game in the same way as a conventional TIG® and TUG®, but without lead. The BRENNEKE TIG® and TUG® nature gives the hunter all the advantages he is used to from our conventional TIG® and TUG® – cut hair, blood on impact, exit wound, utmost accuracy and its renowned consistent performance. The TIG® and TUG® nature is an excellent bullet for all-around hunting use.

All hunters who tested the bullet were enthusiastic about the excellent precision (<2cm/100m), its immediate effect upon impact, the minimum loss of valuable meat and especially the absence of excessive bruising and meat loss.





## Ballistic Data Centerfire Cartridges

Calibre	Bullet	Weight g/grs	Energy Joule				Velocity m/sec				GEE most recommended distance	point of impact at GEE in cm				
			E <sub>0</sub>	E <sub>100</sub>	E <sub>200</sub>	E <sub>300</sub>	V <sub>0</sub>	V <sub>100</sub>	V <sub>200</sub>	V <sub>300</sub>		50 m	100 m	150 m	200 m	300 m
.243 Win.	TOG	6,2/96	2.816	2.222	1.735	1.337	953	847	748	657	191	+0,9	+3,8	+3,3	-1,1	-23,7
	TIG	11,5/177	3.321	2.668	2.120	1.665	760	681	607	538	157	+1,9	+4,0	+0,8	-8,2	-47,2
7x57	TIG nature <small>NEW</small>	8,3/128	3.250	2.441	1.800	1.298	885	767	659	559	175	+1,3	+4,0	+2,5	-3,9	-34,3
	TIG	11,5/177	3.234	2.597	2.056	1.615	750	672	598	530	155	+2,0	+4,0	+0,7	-8,8	-49,2
7x57 R	TIG nature	8,3/128	3.020	2.016	1.293	806	853	697	558	441	162	+1,6	+4,0	+1,5	-7,3	-51,1
	TOG	9,7/150	3.111	2.600	2.158	1.777	800	731	666	605	167	+1,6	+4,0	+1,9	-5,4	-36,7
	TIG	11,5/177	4.154	3.374	2.714	2.154	850	766	687	612	175	+1,4	+4,0	+2,5	-3,7	-32,4
7x64 BRENNEKE	TIG nature	8,3/128	3.603	2.442	1.600	1.010	930	766	620	492	175	+1,2	+3,9	+2,5	-4,1	-38,6
	TOG	9,7/150	3.789	3.198	2.670	2.216	885	812	742	676	185	+1,1	+3,9	+3,0	-1,9	-25,7
	TIG	11,5/177	3.866	3.132	2.505	1.981	820	738	660	587	168	+1,5	+4,0	+2,0	-5,1	-36,9
7x65 R BRENNEKE	TIG nature	8,3/128	3.362	2.262	1.467	919	900	738	595	471	169	+1,3	+4,0	+2,1	-5,2	-43,3
	TOG	9,7/150	3.671	3.088	2.577	2.132	870	798	729	663	182	+1,2	+3,9	+2,8	-2,4	-27,5
	TIG	11,5/177	4.555	3.708	2.997	2.400	890	803	722	646	183	+1,2	+4,0	+3,0	-2,2	-27,4
7 mm Rem. Mag.	TUG	11,7/181	3.559	2.858	2.263	1.776	780	699	622	551	160	+1,8	+4,0	+1,3	-7,1	-43,8
	TUG nature	8,5/132	3.463	2.601	1.919	1.384	900	780	670	569	178	+1,2	+4,0	+2,7	-3,3	-32,3
	TAG	10,0/155	3.785	2.606	1.736	1.123	870	722	589	474	171	+4,0	+4,0	+1,5	-5,9	-45,2
	TOG	10,7/165	3.775	3.164	2.663	2.175	840	769	702	638	176	+1,4	+4,0	+2,6	-3,5	-31,3
	Basic	12,0/185	3.632	2.949	2.371	1.885	778	701	629	561	160	+1,8	+4,0	+1,2	-7,1	-42,6
	TUG	11,7/181	4.128	3.335	2.665	2.106	840	755	675	600	172	+1,4	+4,0	+2,3	-4,2	-34,1
.308 Win.	TUG nature	8,5/132	3.778	2.850	2.115	1.537	940	817	703	600	185	+1,0	+4,0	+3,1	-2,0	-27,8
	TAG	10,0/155	4.050	2.798	1.874	1.213	900	748	612	493	171	+1,3	+4,0	+2,3	-4,8	-40,5
	TOG	10,7/165	4.143	3.484	2.905	2.416	880	807	737	672	184	+1,3	+4,0	+3,3	-1,6	-25,6
	Basic	12,0/185	4.184	3.420	2.770	2.222	835	755	679	609	172	+1,4	+4,0	+2,3	-4,3	-33,8
.30-06	TUG	11,7/181	4.327	3.505	2.809	2.227	860	774	693	617	176	+1,4	+4,0	+2,6	-3,4	-31,4
	TUG nature <small>NEW</small>	8,5/132	4.363	3.311	2.479	1.822	1.010	880	761	653	197	+0,1	+3,7	+3,5	-0,4	-21,5
.30 R Blaser	TUG	11,7/181	5.169	4.217	3.406	2.729	940	849	763	683	192	+1,0	+3,9	+3,4	-0,9	-22,6
	TUG nature	8,5/132	4.578	3.482	2.616	1.931	1.035	903	782	672	201	+0,6	+3,7	+3,6	+0,1	-19,5
	TAG <small>NEW</small>	10,0/155	5.123	3.596	2.463	1.630	1.010	846	700	570	190	+0,8	+3,8	+3,3	-1,3	-26,6
	TOG	10,7/165	5.034	4.257	3.580	2.993	970	892	818	748	200	+0,7	+3,7	+3,5	0	-18,2
.300 Win. Mag.	Basic	12,0/185	5.190	4.277	3.500	2.838	930	844	764	688	190	+1,0	+3,8	+3,2	-1,2	-23,0
	TIG	12,8/198	4.096	3.318	2.654	2.101	800	720	644	573	164	+1,6	+4,0	+1,6	-6,0	-39,8
	TIG nature	9,4/145	3.723	2.796	2.062	1.487	890	771	662	562	176	+1,3	+4,0	+2,6	-3,7	-33,6
	TAG	11,3/175	4.025	2.649	1.672	1.027	844	685	544	426	160	+1,6	+4,1	+1,2	-8,1	-54,6
8x57 JS	TOG	11,7/181	4.030	3.097	2.342	1.739	830	728	633	545	166	+1,5	+4,0	+1,8	-5,7	-39,8
	Basic <small>NEW</small>	13,0/200	4.108	3.304	2.629	2.060	795	713	636	563	162	+1,6	+4,0	+1,4	-6,6	-41,1
	TIG	12,8/198	3.600	2.899	2.304	1.811	750	673	600	532	155	+1,9	+4,0	+0,7	-8,7	-49,0
	TIG nature	9,4/145	3.315	2.472	1.808	1.294	840	725	620	525	166	+1,5	+4,0	+1,8	-5,8	-41,4
8x57 JRS	TAG	11,3/175	3.616	2.358	1.476	910	800	646	511	401	153	+1,9	+4,0	+0,4	-11,0	-64,6
	TOG	14,2/220	3.797	3.132	2.556	2.077	730	663	599	540	153	+2,0	+4,0	+0,4	-9,1	-49,8
	Basic <small>NEW</small>	13,0/200	3.559	2.840	2.240	1.751	740	661	587	519	153	+2,0	+4,0	+0,4	-9,3	-51,8
	TIG	12,8/198	4.600	3.720	2.979	2.358	848	762	682	607	174	+1,4	+4,0	+2,4	-3,9	-32,9
8x64 S BRENNEKE	TOG	14,2/220	4.320	3.582	2.947	2.402	780	710	644	582	162	+1,7	+4,0	+1,4	-6,6	-40,2
	TIG	12,8/198	5.184	4.228	3.419	2.737	900	813	731	654	185	+1,2	+3,9	+3,0	-1,9	-26,5
8x68 S	TIG nature <small>NEW</small>	9,4/145	4.936	3.754	2.819	2.079	1.025	894	775	665	199	+0,6	+3,6	+3,5	-0,1	-20,3
	TOG	14,2/220	5.455	4.560	3.797	3.132	875	800	730	663	183	+1,2	+3,9	+2,9	-2,3	-27,2
	TUG	19,0/293	5.202	4.393	3.687	3.076	740	680	623	569	156	+2,0	+4,0	+0,8	-8,2	-45,8
	TUG nature	14,2/220	4.892	3.992	3.228	2.582	830	750	674	603	171	+1,4	+4,0	+2,2	-4,5	-34,5
9,3x62	TAG	14,6/225	4.908	3.257	2.077	1.293	820	668	533	421	156	+1,7	+4,0	+0,8	-9,4	-58,2
	TOG	16,0/247	5.249	4.380	3.634	2.996	810	740	674	612	169	+1,5	+4,0	+2,0	-4,9	-35,4
9,3x64 BRENNEKE	TUG	19,0/293	5.854	4.966	4.189	3.512	785	723	664	608	165	+1,7	+4,0	+1,7	-5,8	-37,9
	TOG	16,0/247	5.954	4.985	4.152	3.433	862	789	720	655	180	+1,3	+3,9	+2,7	-2,8	-28,7
	TUG	19,0/293	4.589	3.855	3.218	2.679	695	637	582	531	148	+2,3	+4,0	-0,3	-11,2	-55,5
9,3x74 R	TUG nature	14,2/220	4.566	3.715	2.993	2.384	802	723	649	580	165	+1,6	+4,0	+1,7	-5,9	-38,5
	TAG <small>NEW</small>	14,6/225	4.435	2.911	1.840	1.150	780	632	502	397	150	+2,0	+4,0	0	-12,1	-68,1
	TOG	16,0/247	4.500	3.732	3.075	2.518	750	683	620	561	157	+1,9	+4,0	+0,9	-7,9	-45,0
	TOG	17,5/270	6.104	5.113	4.253	3.511	835	764	697	633	175	+1,4	+4,0	+2,5	-3,7	-31,9

All data are subject to change.

## Shotgun Slug cartridges

# BRENNEKE – the original



### Classic

The Classic is an ultra-modern round. Over many years of development, the Classic slug has been refined to perfection. It ensures a flat trajectory, very good accuracy and impressive energy. For the hunter, this means wide number of applications, massive stopping power and more success. This applies equally for driven hunting, deer-stalking and tracking. It can be used in all shotguns, with and without choke for distances up to 50 m.



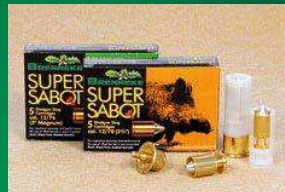
### Camou

The Camou is perfect for stalking or driven hunts where large game is flushed from cover with a minimum of disturbance; effective up to a range of approx. 40 m. The special coating on the slug prevents lead fouling in the barrel. Because of the minimized lead fouling inside of the barrel and the muzzle Camou cartridge can be used for hunting and for training purposes at the shooting range as well.



### SuperSabot

The SuperSabot is revolutionary in terms of its construction. With its moveable core, lead-free construction and an effective range of up to 100 m (from shotguns with rifled barrel)\*, it puts all other slugs in the shade. It mushrooms up to 25 mm diameter, which achieves an immediate and maximum effect. The precision is very good with 6cm group with 5 shots at 100m. The Super Sabot can only be used in rifles barrels without any choke.



### OpalMagnum

There is probably nothing more impressive than the new 12/76 OpalMagnum. It is equipped with a 43,0 g / 666 grs slug. It is therefore extremely powerful with 5.000 Joule at the muzzle. This means that Opal Magnum is perfectly suited for hunting heavy and dangerous game. Also, precision is extraordinary with 10 cm groups with 5 shots at 100m. This slug can be used with smooth and rifled barrels, however not with a choke.



### RubinSabot

Back in 2001, BRENNEKE set new standards in sabot technology with the RubinSabot. Now, we are introducing an even better version with more velocity and more energy. Specially tailored to take into account European hunters and their needs, it combines the advantages of a classic slug in 20 ga with the benefits of a sabot. The high velocity (+13 % at 50 m in comparison to Camou) and very high energy (+25 % at 50m in comparison to Camou) result in very good precision of 4 cm group with 5 shots at 50 m. The Rubin Sabot can be used for all types of hunting up to 80 m.



### RubinSabot nature

The new RubinSabot nature is the first leadfree slug made of tin that is suitable for all kinds of smooth and rifled barrels. The 19 g slug has a velocity at the muzzle of 610 m/s and can be used just like a lead slug. The energy at 50 m is still at 1.888 J which is 10 % more than with the regular 12/70 Classic. Tin was chosen for the material because it is foodsafe and reacts similar to lead. With the RubinSabot nature, you can hunt all kind of game whenever you want to hunt without lead.



### SuperMagnum

The SuperMagnum combines the advantages of a classic slug with modern materials. It is an impressive piece of equipment with its specially alloyed lead head, which provides maximum penetrating power as a result of its hardness. The SuperMagnum can be used for up to 100 m.



Calibre	Bullet	Weight g/grs	Content	Energy Joule					Velocity m/sec					Point of impact				
				E <sub>0</sub>	E <sub>25</sub>	E <sub>50</sub>	E <sub>75</sub>	E <sub>100</sub>	V <sub>0</sub>	V <sub>25</sub>	V <sub>50</sub>	V <sub>75</sub>	V <sub>100</sub>	0 m	25 m	50 m	75 m	100 m
12/70 – 2 3/4"	Classic	31,5/490	5	2912	2156	1715	1418	1191	430	370	330	300	275	-2,0	+3,1	+3,6	-1,7	-13,8
	Camou	28,4/440	5	3000	2092	1557	1267	1080	460	384	331	299	276	-2,0	+3,0	+3,8	-9,0	-12,2
	RubinSabot nature	19,0/293	5	3535	2598	1888	1389	1074	610	523	446	382	336	-5,0	+0,4	+3,6	+3,7	-0,5
	RubinSabot	28,0/432	5	3067	2432	1954	1620	1397	468	417	374	340	316	-5,0	+1,3	+4,0	+2,3	-4,6
	SuperSabot	31,8/490	5	2926	2356	1942	1661	1467	429	385	350	323	304	-5,0	+2,0	+4,9	+2,7	-5,2
12/76 – 3"	SuperMagnum	39,0/600	5	3947	2862	2188	1803	1552	450	383	335	304	282	-5,0	+2,2	+5,1	+2,7	-6,2
	OpalMagnum	43,0/666	5	5184	4026	3166	2564	2173	491	433	384	345	318	-5,0	+1,1	+4,0	+2,7	-3,8
	RubinSabot	28,0/432	5	3771	2986	2371	1910	1591	519	462	412	369	337	-5,0	+0,9	+3,8	+3,2	-1,9
	SuperSabot	31,8/490	5	3438	2746	2220	1849	1598	465	416	374	341	317	-5,0	+1,4	+4,2	+2,6	-4,3
16/70 – 2 3/4"	Classic	27,0/415	5	2325	1746	1397	1185	1037	415	360	322	296	277	-2,0	+3,1	+3,5	-1,9	-14,2
20/70 – 2 3/4"	Classic	24,0/370	5	2219	1653	1301	1092	951	430	371	329	302	281	-2,0	+3,1	+3,7	-1,2	-12,8
20/76 – 2 3/4"	SuperMagnum	28,4/440	5	2874	2261	1810	1509	1312	450	399	357	326	304	-2,0	+3,6	+5,3	-2,2	-6,7
28/70 – 2 3/4"	Camou	18,3/282	5	1549	1120	885	745	646	412	350	311	285	266	-1,0	+2,0	0,0	-8,2	-23,7

BRENNEKE Slug cartridges are suitable for all types of shotgun barrels with or without choke.  
Exception: SuperSabot and OpalMagnum.